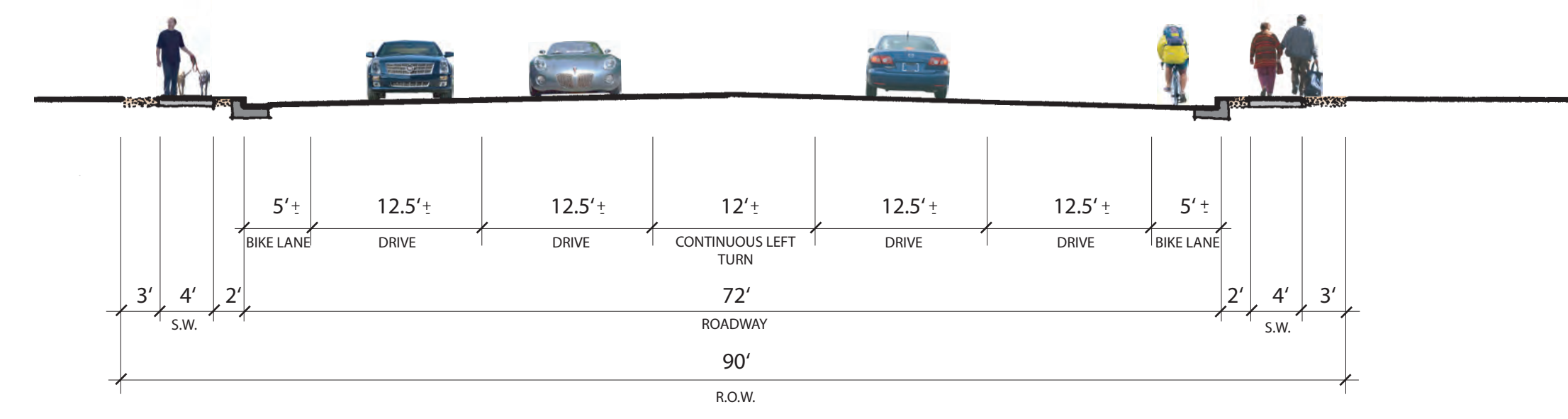


# Changing the Character of Grant Road

## Grant Road Today



EXISTING STREET CROSS SECTION

The design of Grant Road's improvements addresses its current challenges as a major arterial street, such as congestion and safety, and provides for the mobility and access needs of pedestrians, cyclists, and transit riders, as well as motorists. The roadway design also provides a framework within which private investment can revitalize the corridor. The Grant Road District overlay zoning is a tool that can guide private investment to complement and take advantage of the public investment in the road.



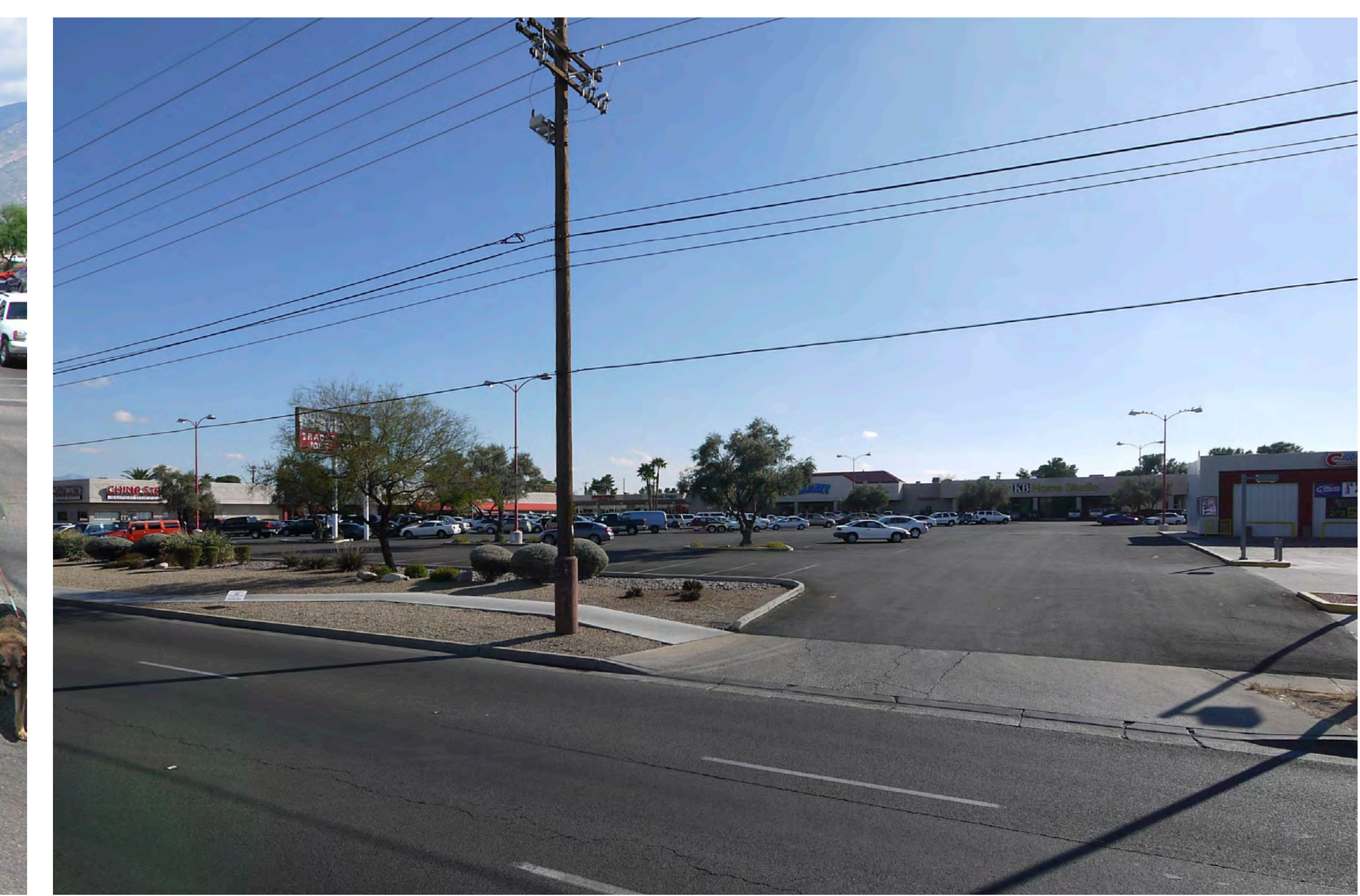
Grant Road is an important east-west connection for people throughout the Tucson region.



The community values Grant Road's wealth of locally owned businesses.

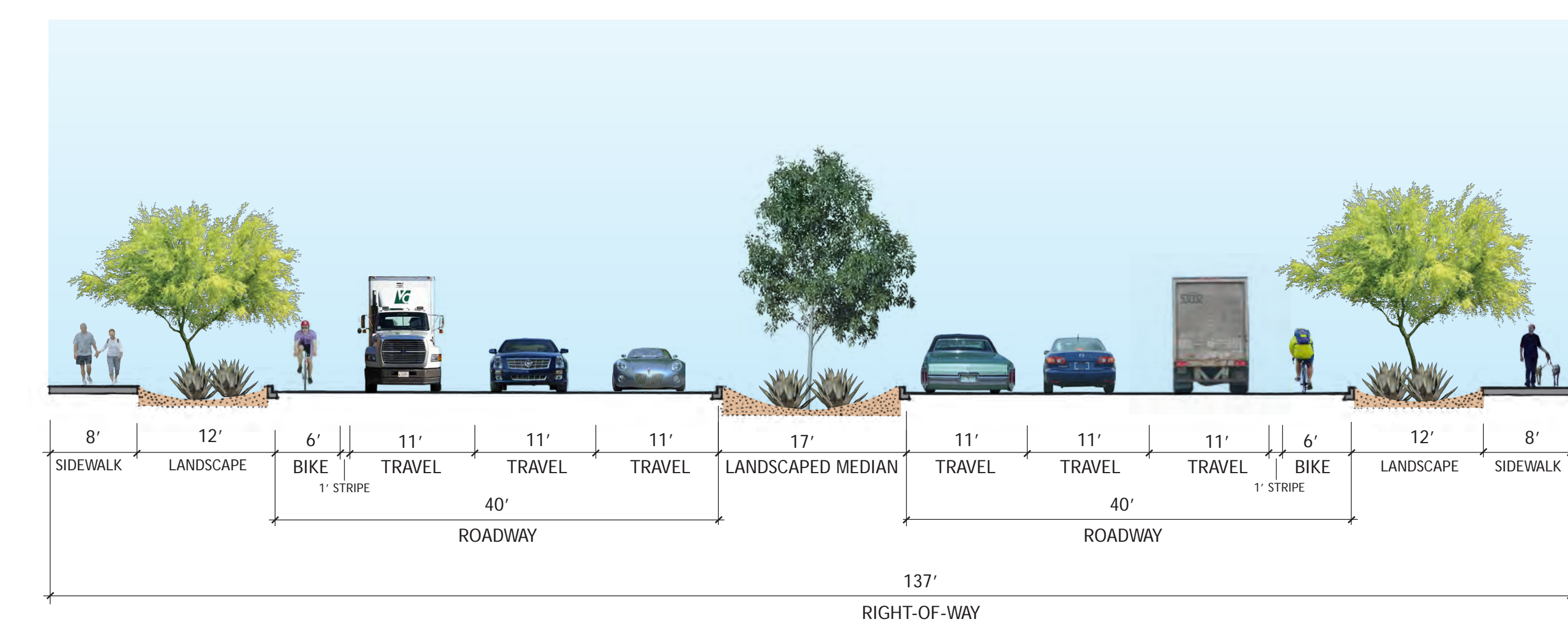


Grant Road's intersections are congested and challenging for motorists, cyclists and pedestrians.

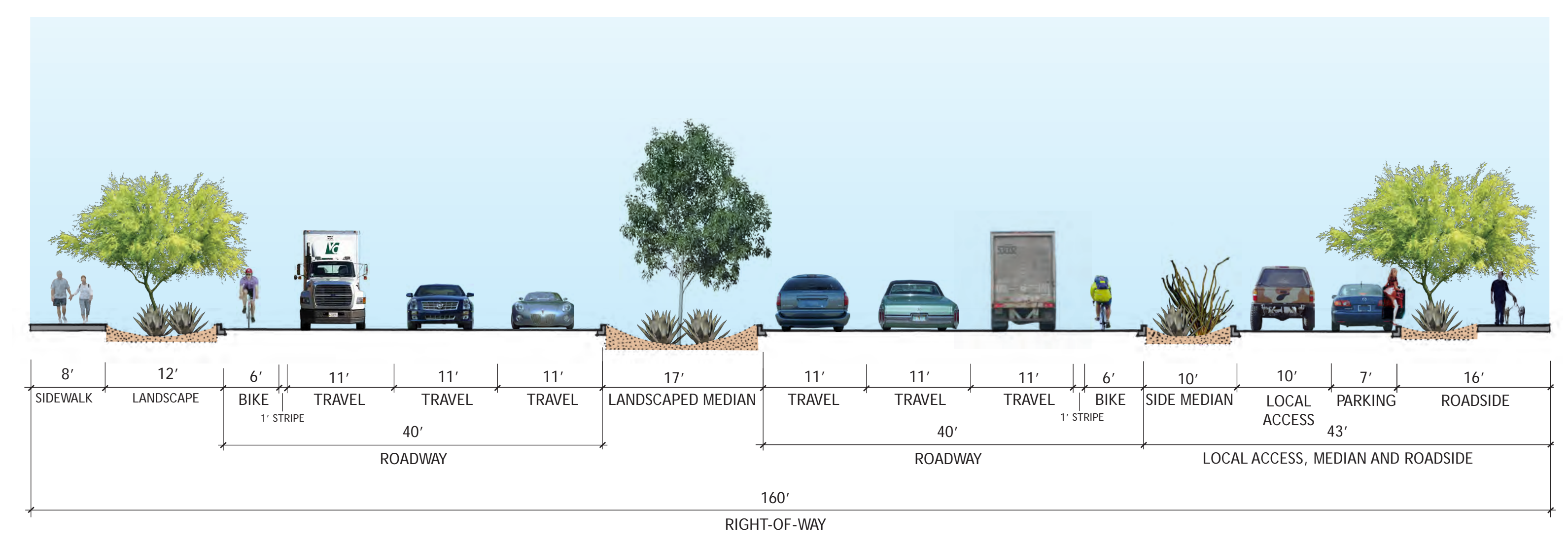


Much of the street frontage along Grant Road is dominated by curb cuts and parking lots.

## Grant Road Tomorrow



137 FOOT RIGHT-OF-WAY  
STANDARD STREET SECTION



160 FOOT RIGHT-OF-WAY  
STANDARD STREET SECTION  
WITH LOCAL ACCESS LANE

\* These images are intended to illustrate CC&V Plan and Grant Road Improvement Plan concepts. Street improvements and development shown are conceptual only.



The new Grant Road design will have more space for autos, a wide bike lane, and improved transit facilities such as bus pull-outs and enhanced stop facilities.



The use of the "Indirect Left Turn" turn at major intersections will mean less vehicle congestion and shorter, safer, and more comfortable pedestrian crossings.



Grant Road's design features several innovations, such as Tucson's TOUCAN bike and pedestrian-activated crossing, that make the street work better for everyone.



Grant Road's pedestrian realm will buffer pedestrians from traffic with a 12-foot landscape area, while its 8-foot sidewalk can accommodate activity along revitalized properties.