

INSTRUCTIONS

The focus of this worksheet is exploring the **impacts on neighborhoods** by the widening of Grant Road, but also the **opportunities** created for neighborhoods to improve. This exercise focuses on one block between Olsen Avenue and Plumer Avenue, but the issues raised here could apply to many places where Grant Road passes through neighborhoods.

You are presented with **two concepts for an alignment** through this area. The concepts are shown in **plan drawings** as well as **site sections and detail plans**. Issues to consider as your group answers the questions to the right include the inclusion of a local access lane along existing residential properties and use of the excess property acquired for the right-of-way.

WORKSHOP QUESTIONS

Local Access Lane Questions:

What do you think about the two examples of the local access lane conditions—

Which concept is the group most comfortable with:

Narrow Concept	1	2	Neutral	3	4	Standard Concept	5
----------------	---	---	---------	---	---	------------------	---

Excess Right-of-Way Design Concept Questions:

For each of the design concepts—let us know how appropriate the group believes the concept is for Grant Road. Note the key reasons for your opinions on the worksheet.

Two-Story Mixed Use Office Buildings

Not Appropriate	1	2	Neutral	3	4	Very Appropriate	5
-----------------	---	---	---------	---	---	------------------	---

Open Space with Multi-use Path

Not Appropriate	1	2	Neutral	3	4	Very Appropriate	5
-----------------	---	---	---------	---	---	------------------	---

Courtyard Residential Buildings

Not Appropriate	1	2	Neutral	3	4	Very Appropriate	5
-----------------	---	---	---------	---	---	------------------	---

Residential Buildings and Open Space with Multi-Use Path

Not Appropriate	1	2	Neutral	3	4	Very Appropriate	5
-----------------	---	---	---------	---	---	------------------	---

What issues are most important?

Providing open space:	Not Important	1	2	Neutral	3	4	Very Important	5
Buffering adjacent neighborhoods from noise:	Not Important	1	2	Neutral	3	4	Very Important	5
Providing new housing choices:	Not Important	1	2	Neutral	3	4	Very Important	5
Reducing the cost of acquisition by allowing development:	Not Important	1	2	Neutral	3	4	Very Important	5
Providing a multi-use path:	Not Important	1	2	Neutral	3	4	Very Important	5

Concluding Question:

Given all of the discussions your group has had, which overall design concept for the cross section of Grant Road and its alignment does the group favor and how strongly:

Strongly Favor Concept 1	1	2	Neutral	3	4	5	Strongly Favor Concept 2
--------------------------	---	---	---------	---	---	---	--------------------------

GUIDING PRINCIPLES

THE FOLLOWING GUIDING PRINCIPLES OF THE GRANT ROAD IMPROVEMENT PLAN ARE RELEVANT TO THE CONCEPTS IN THESE ACTIVITIES

1.3c Improving neighborhood access to businesses and other destinations by providing quality connections for all users

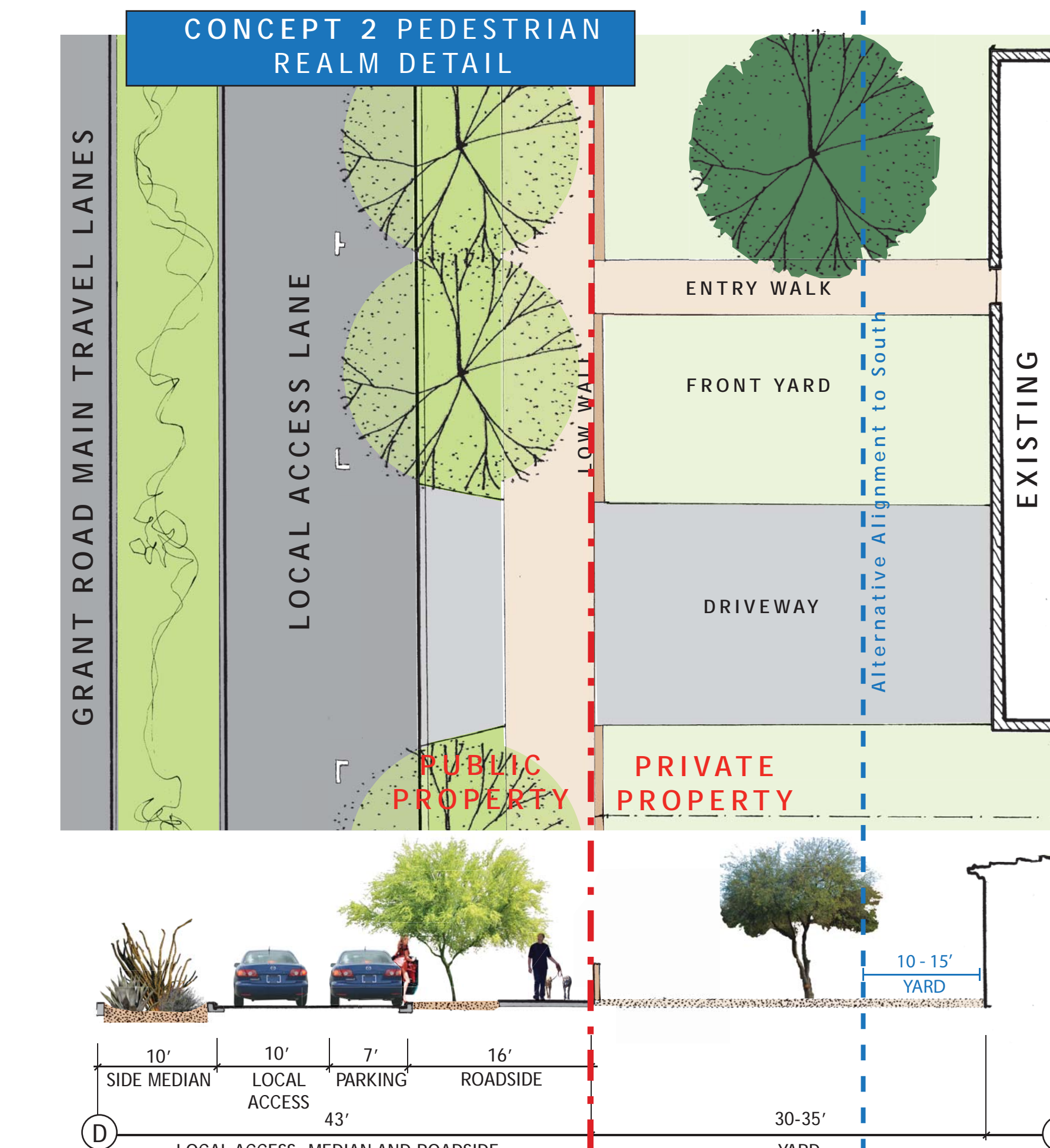
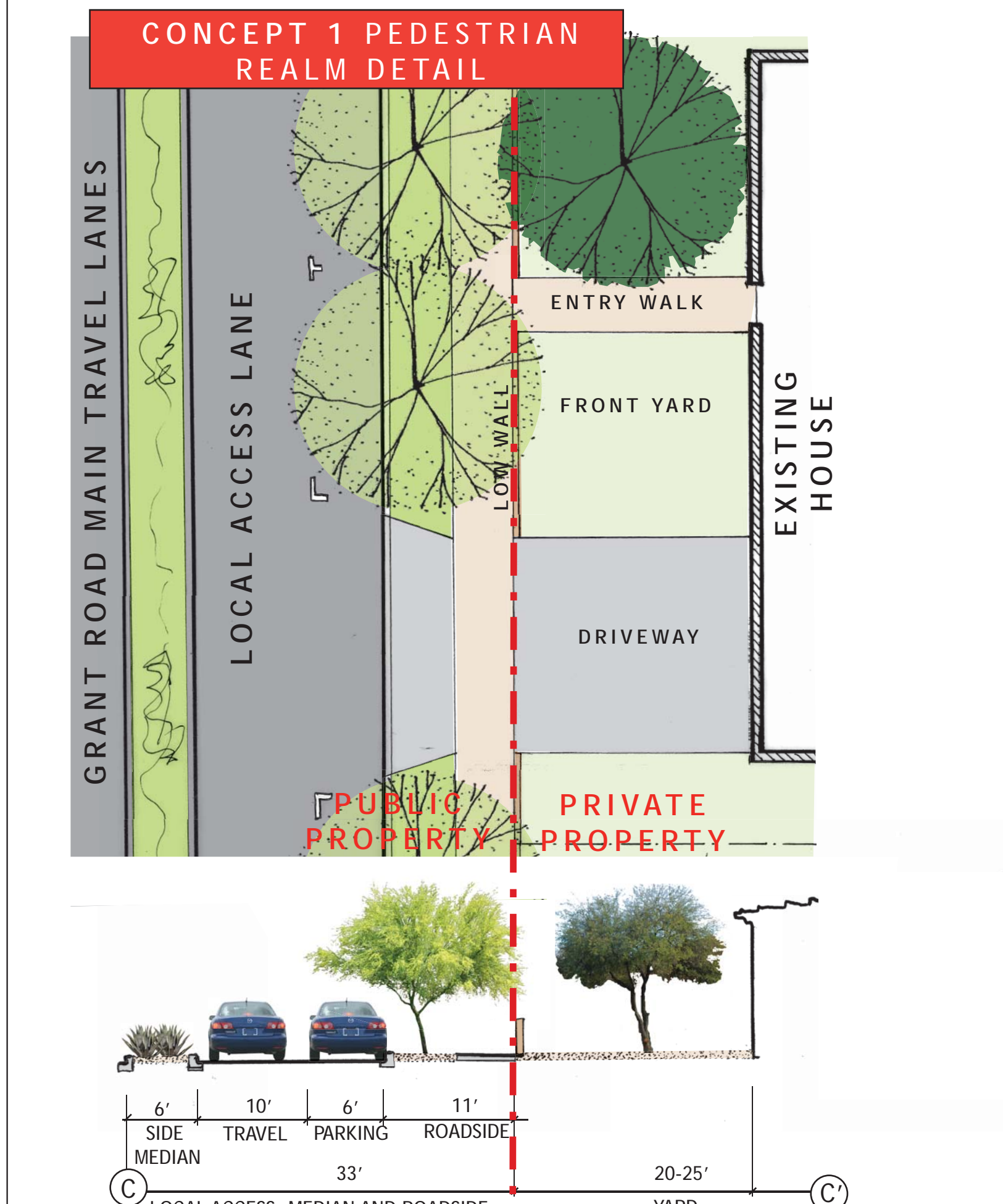
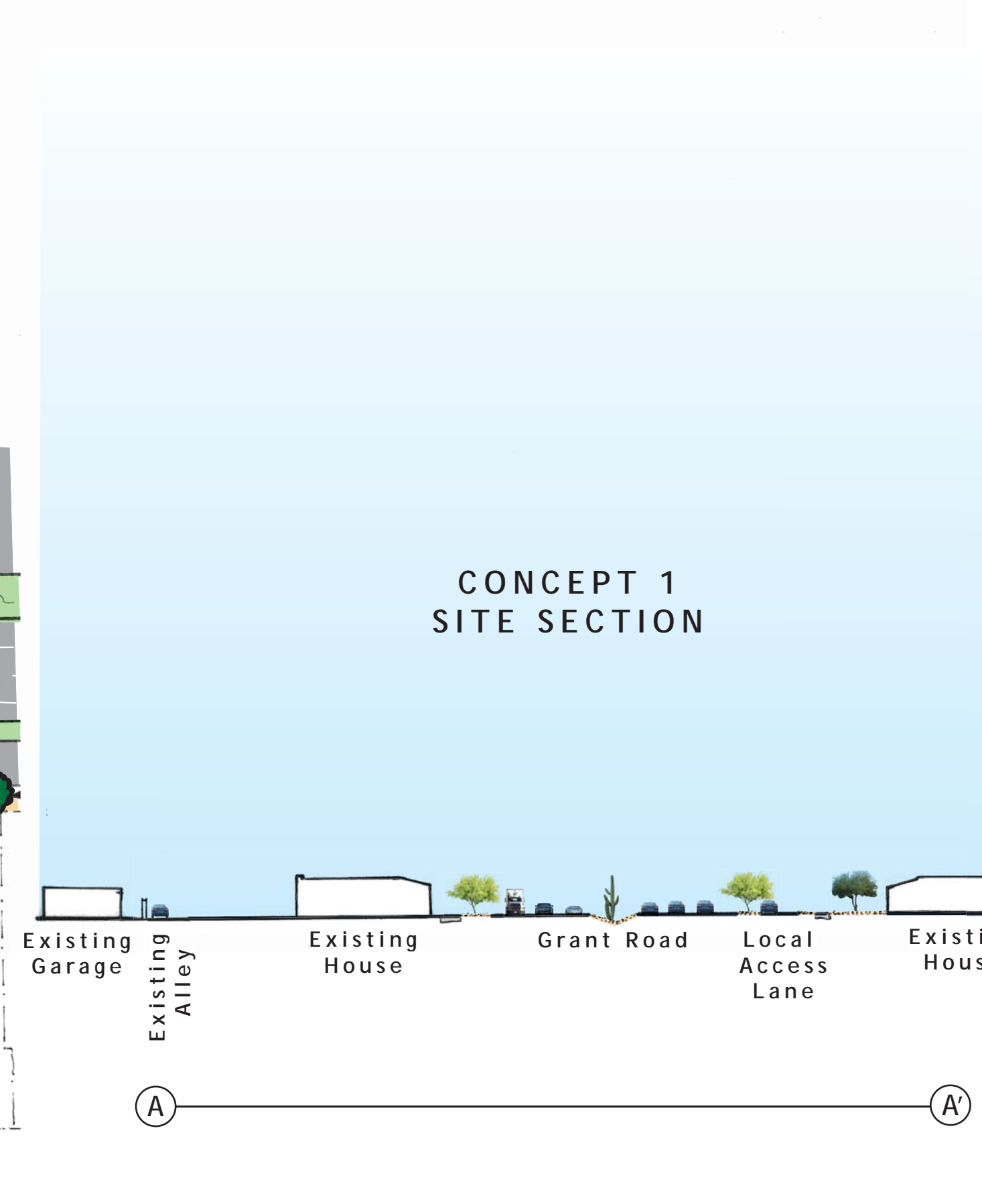
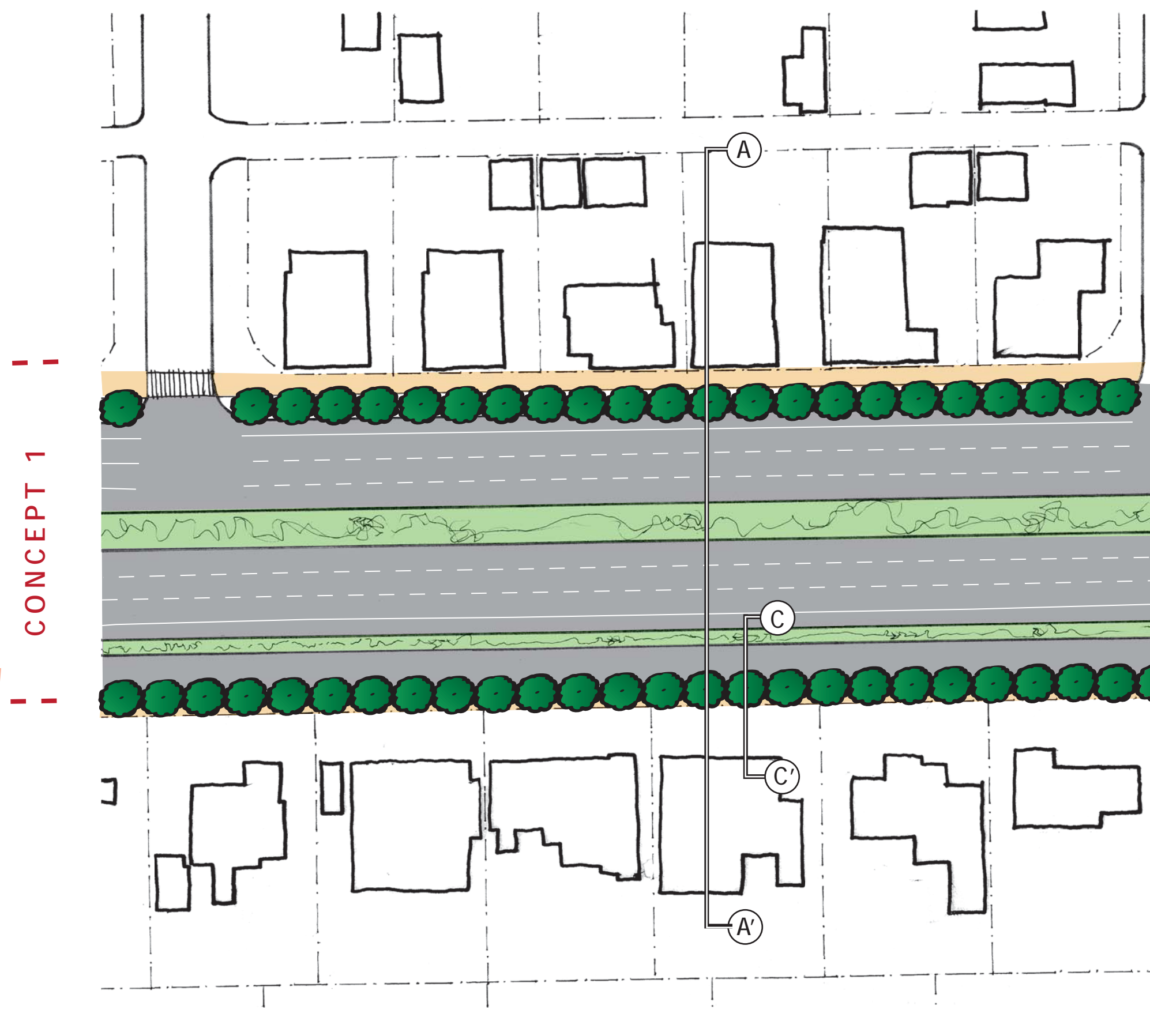
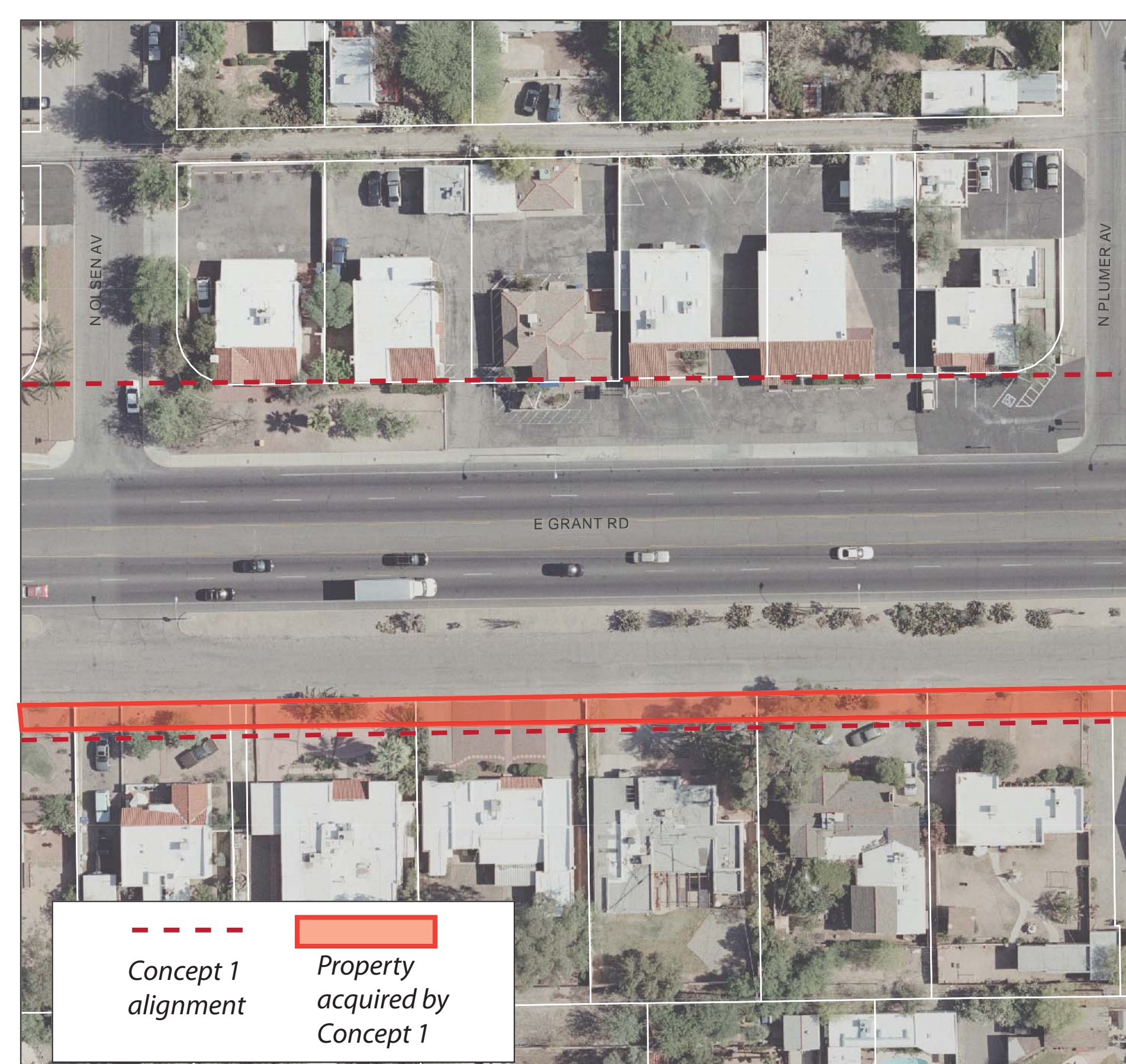
2.1 Preserve and enhance the scale and character of existing residential neighborhoods

2.3 Support the viability of small, local and independent businesses

2.11 Encourage private investment that revitalizes opportunity sites along Grant Road

4.7 Coordinate new development and revitalization with new and existing amenities and multimodal infrastructure

CONCEPT 1: MINIMAL ACQUISITION WITH REDUCED LOCAL ACCESS LANE ON SOUTH



CONCEPT 2: FULL ACQUISITION AND REDEVELOPMENT TO THE NORTH WITH LOCAL ACCESS LANE ON SOUTH

