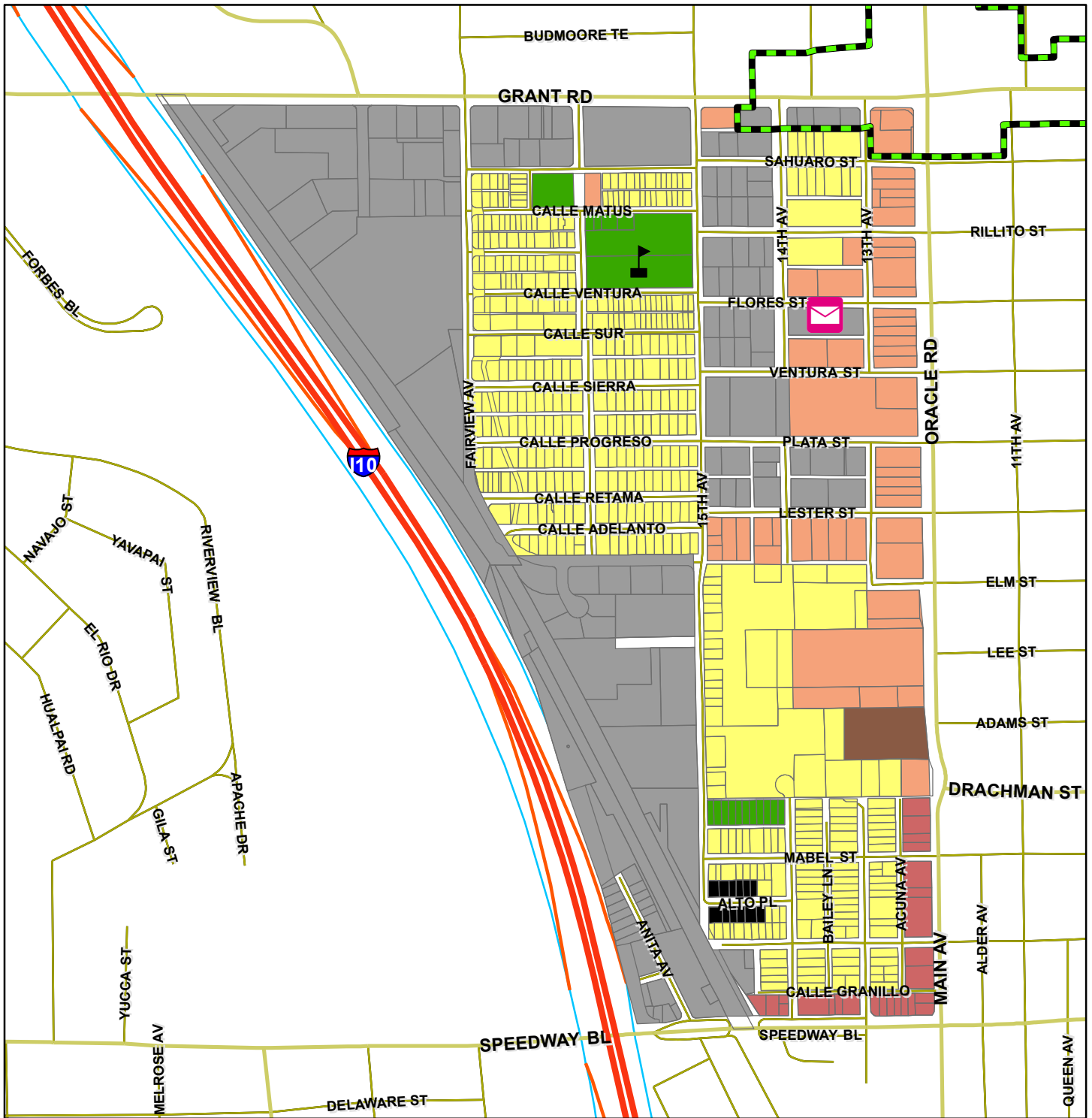


UNIT 6 NEIGHBORHOOD LAND USE & CIRCULATION PLAN



Unit 6 Neighborhood Plan Area Mapped Land Use

- Area of Amendment - Resolution #11781, March 15, 1982 Possible Park Industrial type development
- Low Medium Density
- High Density Residential; High-Density Residential
- Low Medium Intensity Commercial
- High Intensity Commercial
- Industrial
- Park

- Parcel Boundary
- Grant Road District
- Schools
- Post Office

