

INSTRUCTIONS

This sheet shows **two alternatives** for Grant Road between Fontana Avenue and Geronimo Avenue. The alternatives are displayed in **illustrative plans and site sections**. As your group answers the questions below, please consider the ideas for land use, redevelopment and parking strategies as well as the connection between Grant Road and Mansfield Park.

WORKSHOP QUESTIONS

Parking Questions:

Of the various parking options, which do you feel is most appropriate for the Western Community Character Segment:

Shared Parking to reduce total amount of parking provided:

Not Appropriate	Neutral	Very Appropriate
1	2	3

Turning underutilized parcels into business district parking lots:

Not Appropriate	Neutral	Very Appropriate
1	2	3

Assisting businesses in reconfiguring their properties to create district parking:

Not Appropriate	Neutral	Very Appropriate
1	2	3

Property Reuse Questions:

Is your group comfortable with having 3 to 4 story buildings front onto Grant Road?

Not Comfortable	Neutral	Very Comfortable
1	2	3

What if the buildings fronting onto Grant Road were 1 or 2 story like the majority of buildings that exist today along Grant?

Not Comfortable	Neutral	Very Comfortable
1	2	3

Is your group comfortable with having up to 3 story buildings front onto Sahuaro Street or would 2 story buildings be more appropriate?

Up to 3	Neutral	Up to 2
1	2	3

Does your group favor the land uses of Concept 1 or Concept 2?

Favor Concept 1	Neutral	Favor Concept 2
1	2	3

Pedestrian Realm Questions:

Does the storefront example create a comfortable pedestrian environment:

Not Comfortable	Neutral	Very Comfortable
1	2	3

Does the restaurant patio example create a comfortable pedestrian environment:

Not Comfortable	Neutral	Very Comfortable
1	2	3

Would adding a patio wall to the restaurant patio example create a more comfortable dining environment:

No	Not Sure	Yes
1	2	3

Does the group think the local access lane is a good concept for making Grant Road more pedestrian and retail friendly?

No	Neutral	Yes
1	2	3

Concluding Question:

Given all of the discussions your group has had, which overall design concept does the group favor and how strongly:

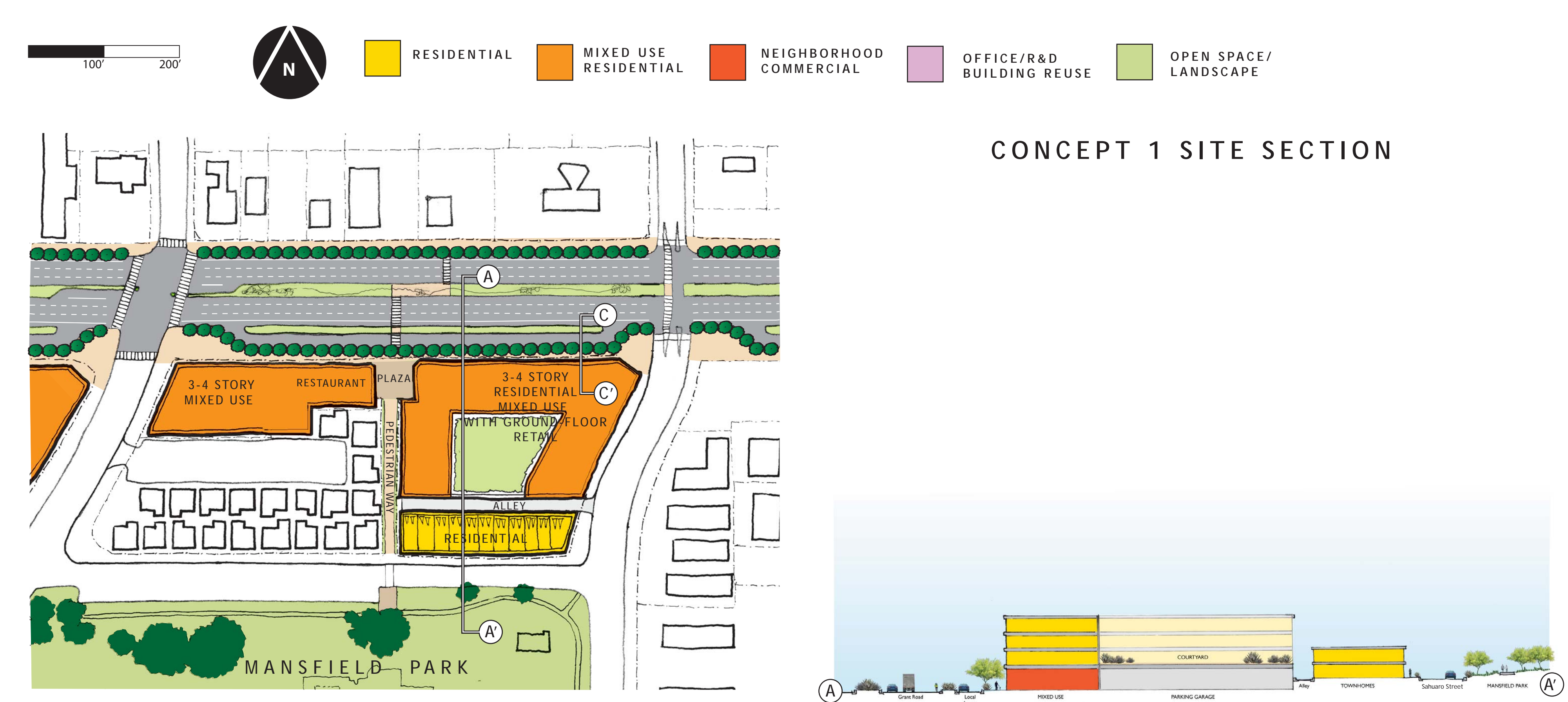
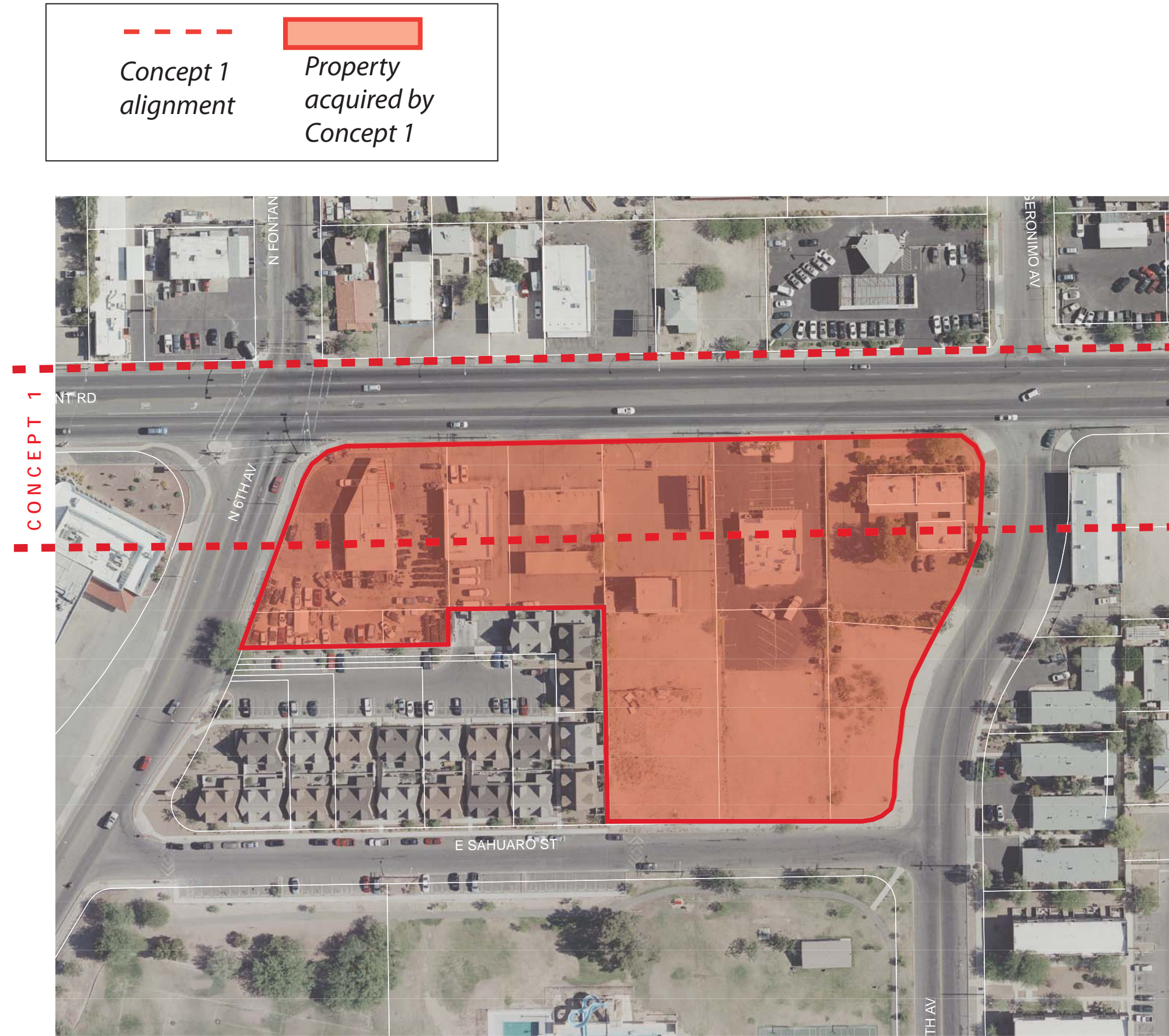
Strongly Favor Concept 1	Neutral	Strongly Favor Concept 2
1	2	3

GUIDING PRINCIPLES

THE FOLLOWING ARE GUIDING PRINCIPLES OF THE GRANT ROAD IMPROVEMENT PLAN RELEVANT TO THE CONCEPTS IN THESE ACTIVITIES

- 1.3c Improving neighborhood access to businesses and other destinations by providing quality connections for all users
- 2.2 Support opportunities for a range of options for housing tenancy and type
- 2.3 Support the viability of small, local, and independent businesses
- 2.7 Develop district with multiple uses and shared parking
- 2.9 Work to create safer environments that discourage crime and increase personal safety
- 2.11 Encourage private investment that revitalizes opportunity sites along Grant Road
- 4.7 Coordinate new development and revitalization with new and existing amenities and multimodal infrastructure

CONCEPT 1: STANDARD CROSS SECTION WITH LOCAL ACCESS LANE



CONCEPT 2: STANDARD CROSS SECTION

