

**INSTRUCTIONS**  
This sheet shows **three concepts** for the area around 1st Avenue and Grant Road. The concepts differ in their approaches to left turns, the width and location of their alignments, and approaches to redevelopment and open space. Please consider these issues as your group answers the questions below.

**WORKSHOP QUESTIONS**

Excess Right-of-Way Design Concept Questions:

Is your group comfortable with having 3 to 4 story buildings front onto Grant Road?

Not Comfortable	Neutral	Very Comfortable
1	2 3	4 5

What if the buildings fronting onto Grant Road were 1 or 2 story like the majority of buildings that exist today along Grant?

Not Comfortable	Neutral	Very Comfortable
1	2 3	4 5

Do you think that the transition of uses and landscaping in Concept 1?

Not Comfortable	Neutral	Very Comfortable
1	2 3	4 5

In Concept 2, do you think that office or residential uses are the most appropriate?

Office Most Appropriate	Neutral	Residential Most Appropriate
1	2 3	4 5

Intersection Design Concept Questions:

Do you favor one concept more than the other, from the perspective of driving through the intersection:

Favor Concept 1	Neutral	Favor Concept 2
1	2 3	4 5

Do you favor one concept more than the other, from the perspective of walking or bicycling through the intersection or from an ADA use perspective (that of vision or mobility challenged users):

Favor Concept 1	Neutral	Favor Concept 2
1	2 3	4 5

Do you favor one concept more than the other, from the combined perspective of all users:

Favor Concept 1	Neutral	Favor Concept 2
1	2 3	4 5

Concluding Question:

Given all of the discussions your group has had, which overall design concept does the group favor and how strongly:

Favor Concept 1	Neutral	Favor Concept 2
1	2 3	4 5

**GUIDING PRINCIPLES**

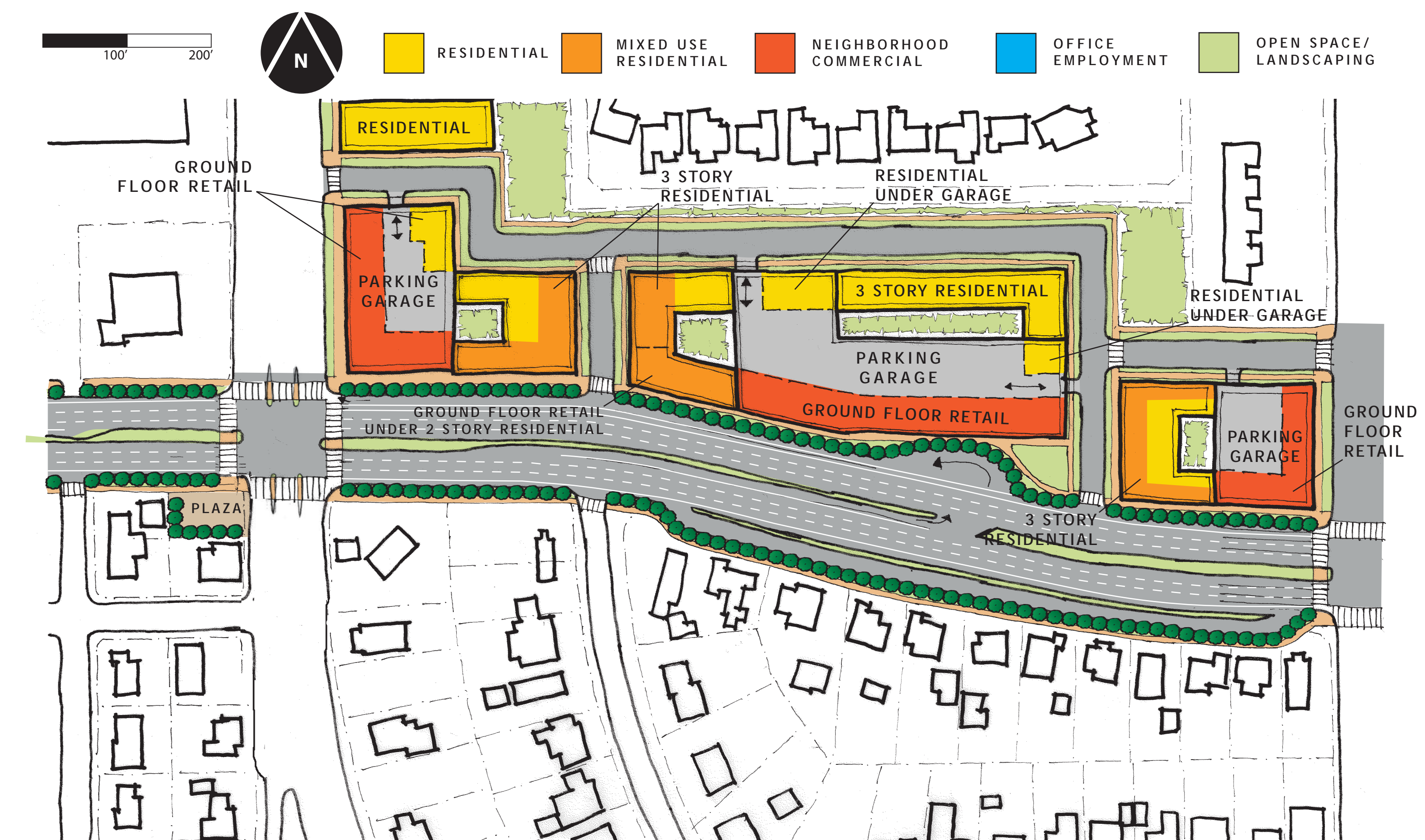
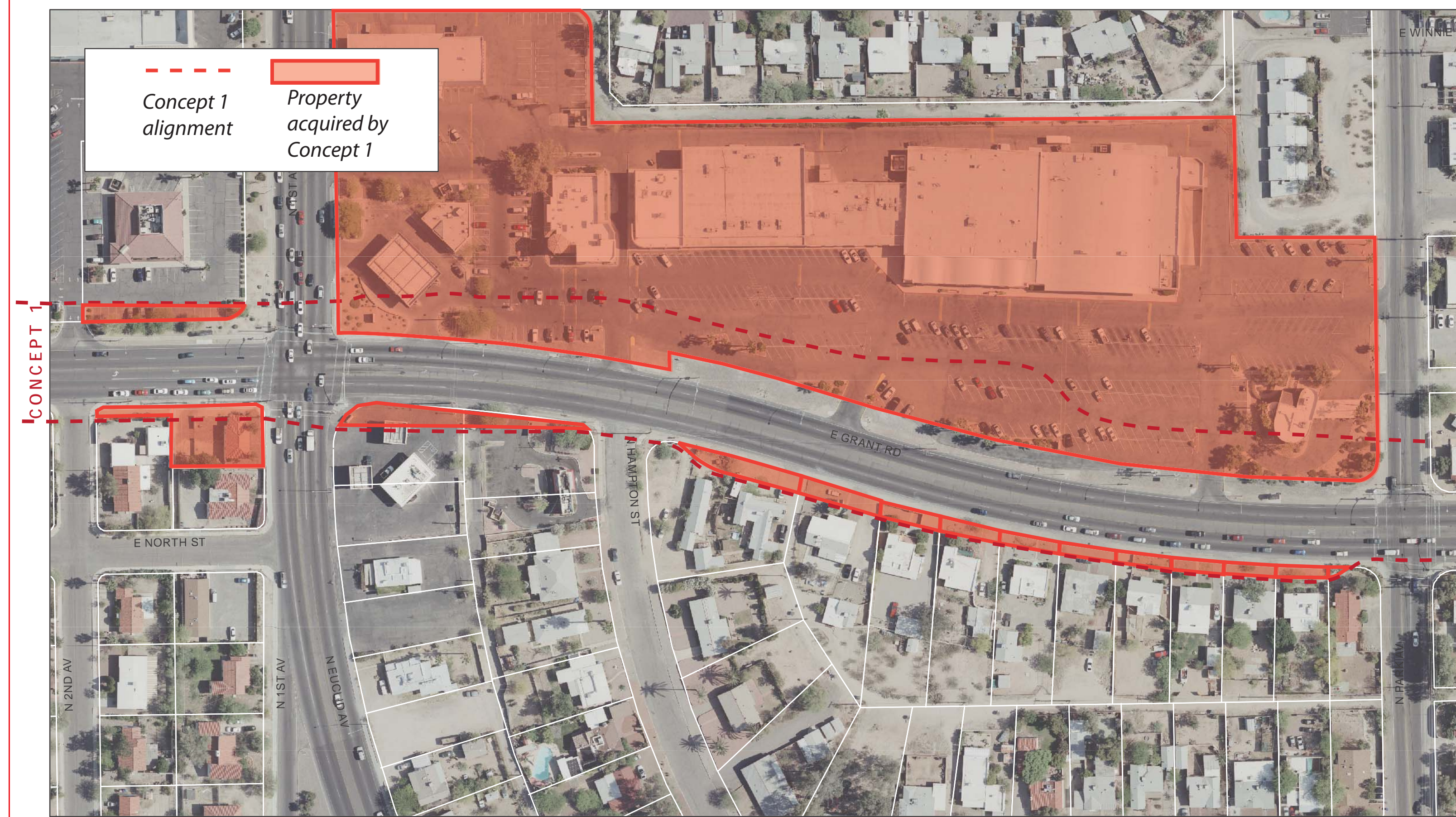
THE FOLLOWING ARE GUIDING PRINCIPLES OF THE GRANT ROAD IMPROVEMENT PLAN RELEVANT TO THE CONCEPTS PRESENTED IN THIS EXERCISE

**1.3a** Balance mobility along and across Grant Road with access to businesses, residences and other destinations providing safe vehicular access to properties on Grant Road.

**2.11** Encourage private investment that revitalizes opportunity sites along Grant Road.

**4.7** Coordinate new development and revitalization with new and existing amenities and multimodal infrastructure

**CONCEPT 1: INDIRECT INTERSECTION**



**CONCEPTS 2A & 2B: ENHANCED TRADITIONAL INTERSECTION**

