

INSTRUCTIONS

This sheet shows **two concepts** for the intersection of Campbell Avenue and Grant Road and the surrounding area. The concepts differ in their approaches to left turns, the width and location of their alignments, and approaches to redevelopment and open space. Please consider these issues as your group answers the questions below.

WORKSHOP QUESTIONS

Alignment Design Concept Questions:

Which design concept do you favor the most—

To the east of Campbell:

Favor Concept 1	Neutral	Favor Concept 2
1	3	5

To the west of Campbell:

Favor Concept 1	Neutral	Favor Concept 2
1	3	5

For Concept 1, which design concept do you favor to the east of Campbell – remember that either design concept would affect existing development on the north or south side of Grant Road:

Favor North Potential Alignment	Neutral	Favor South Potential Alignment
1	3	5

Excess Right-of-Way Design Concept Questions:

Is your group comfortable with having 3 to 4 story buildings front onto Grant Road?

Not Comfortable	Neutral	Very Comfortable
1	3	5

What if the buildings fronting onto Grant Road were 1 or 2 story like the majority of buildings that exist today along Grant?

Not Comfortable	Neutral	Very Comfortable
1	3	5

Intersection Design Concept Questions:

Do you favor one concept more than the other, from the perspective of driving through the intersection:

Favor Concept 1	Neutral	Favor Concept 2
1	3	5

Do you favor one concept more than the other, from the perspective of walking or bicycling through the intersection or from an ADA use perspective (that of vision or mobility challenged users):

Favor Concept 1	Neutral	Favor Concept 2
1	3	5

Do you favor one concept more than the other, from the combined perspective of all users:

Favor Concept 1	Neutral	Favor Concept 2
1	3	5

Concluding Question:

Given all of the discussions your group has had, which overall design concept does the group favor and how strongly:

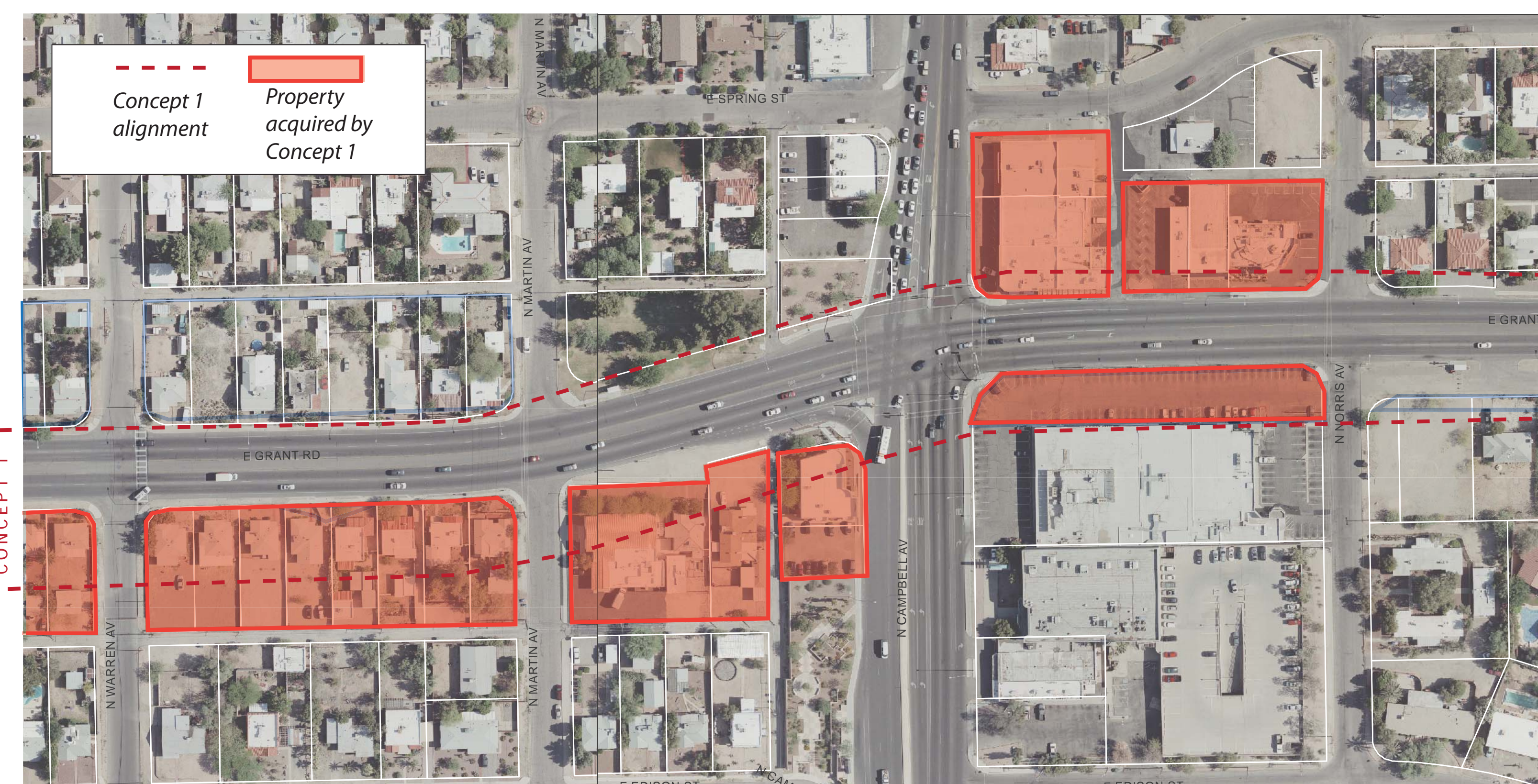
Strongly Favor Concept 1	Neutral	Strongly Favor Concept 2
1	3	5

GUIDING PRINCIPLES

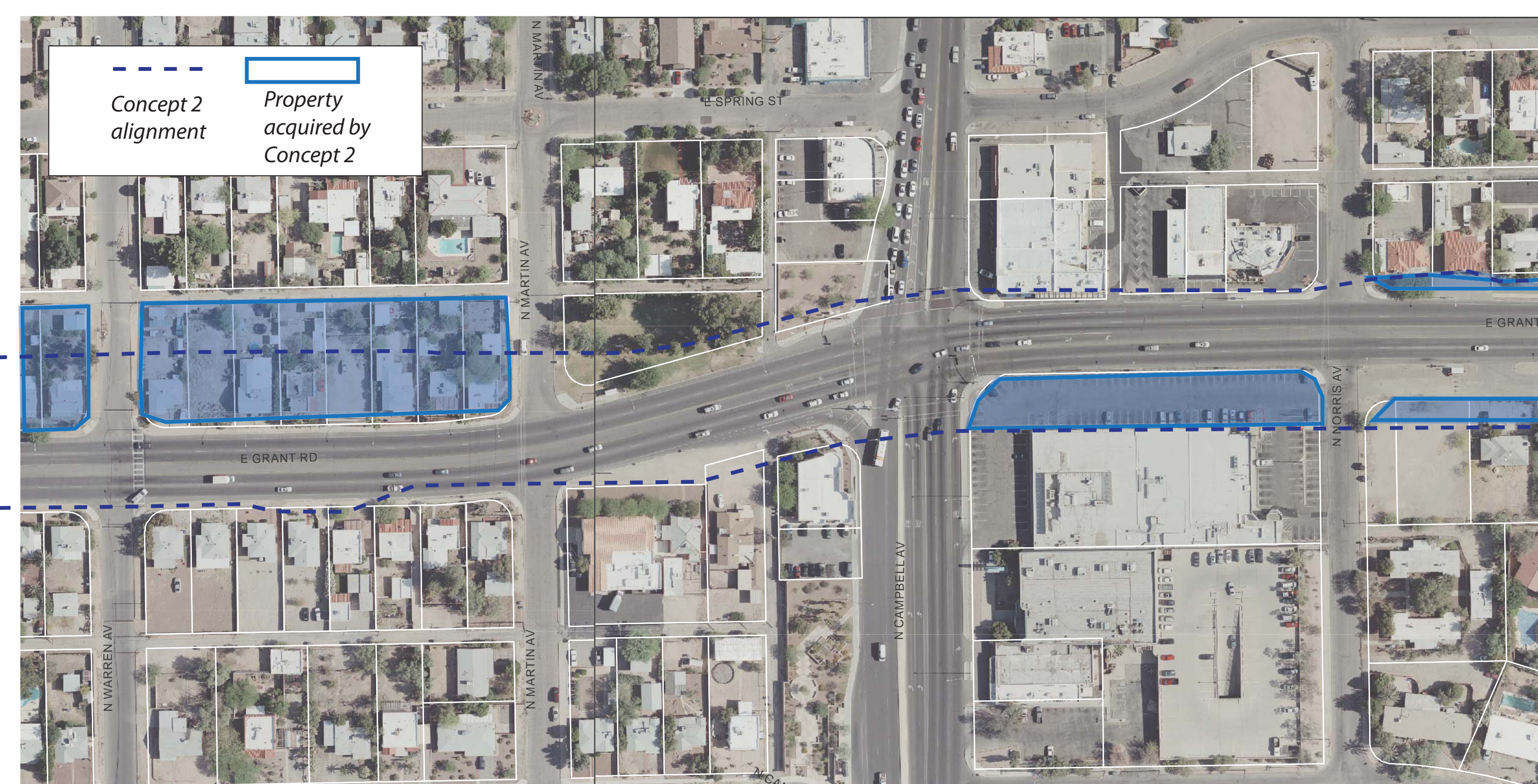
THE FOLLOWING ARE GUIDING PRINCIPLES OF THE GRANT ROAD IMPROVEMENT PLAN RELEVANT TO THE CONCEPTS PRESENTED IN THIS EXERCISE

- 1.2d Improving transit stops and access to them as well as land uses around them
- 1.2e Considering land use and other needs of transit, bicycle and walking-dependent populations
- 1.3b Facilitating regional access to businesses
- 1.3c Improving neighborhood access to businesses and other destinations
- 2.3 Support the viability of small, local, and independent businesses
- 2.11 Encourage private investment that revitalizes opportunity sites along Grant Road
- 4.7 Coordinate new development and revitalization with new and existing amenities and multimodal infrastructure

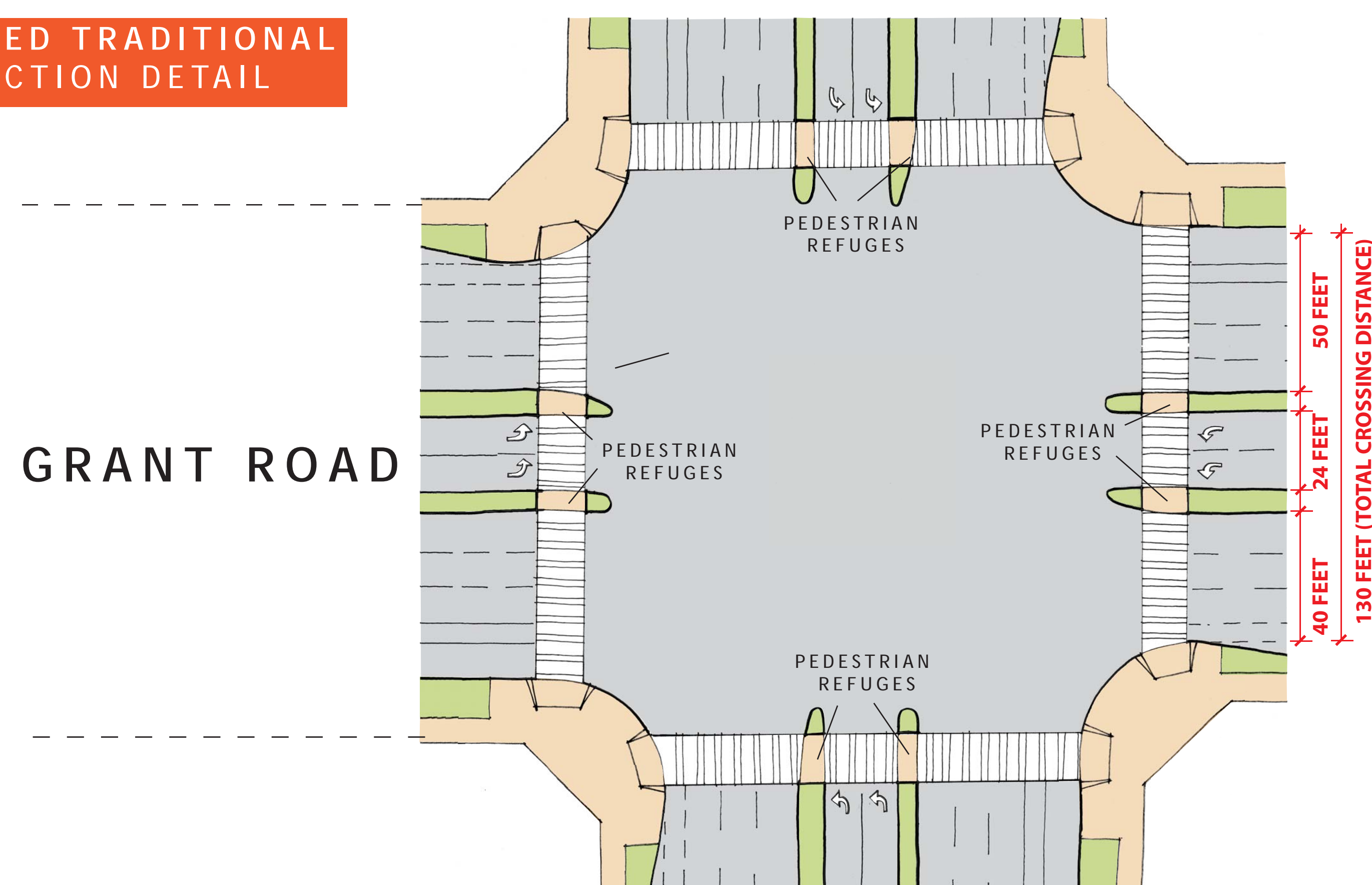
CONCEPT 1: ENHANCED TRADITIONAL INTERSECTION



CONCEPT 2: INDIRECT INTERSECTION



ENHANCED TRADITIONAL INTERSECTION DETAIL



INDIRECT INTERSECTION DETAIL

